

Infrared APC Laser Module

AML-R090-830XXX-02

6-2D-LM83-006_Rev.00

Φ9.0mm 830nm Laser Module With Random Dots Pattern

Features

Power set by user
High quality Random pattern DOE
Random Dot >30,000



Absolute maximum ratings

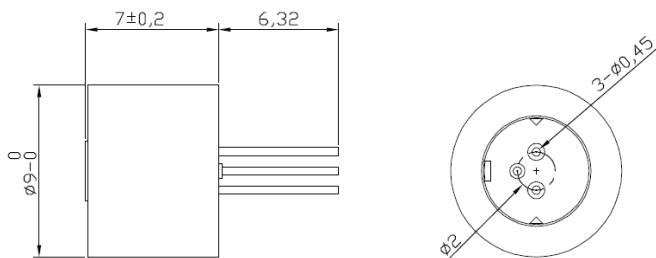
Parameter	Symbol	Rating	Unit
Laser Module Optical Output Power	P _o	160	mW
Reverse Voltage (LD)	V _{RL}	0	V
Reverse Voltage (PD)	V _{RD}	30	V
Forward Current (PD)	I _{FD}	10	mA
Operation Case Temperature	T _C	-10~50	°C
Storage Temperature	T _s	-40~85	°C

Electrical and optical characteristics (T_c=25 °C)

Parameter	Symbol	Min.	Typ.	Max.	Unit	Conditions
Wavelength	λ	-	830	-	nm	P _o = 150mW
Threshold Current	I _{th}	-	65	80	mA	
Operation Current	I _{op}		260	350	mA	P _o =150mw
Operation Voltage	V _{op}		2	2.4	Volt	P _o =150mw
Monitor Current	I _m	0.4	1.7	2.15	mA	P _o =150mw V _{RD} =5V
Random Dot				>30,000		
Field Of View				(H)80°x (V)60°		
Image Ratio				4:3		

* Sufficient heat dissipation is required for CW operation.

Outline dimensions (Units: mm)



ARIMA LASERS CORP.

PHONE: 886-3-4699800 | FAX: 886-3-4699600

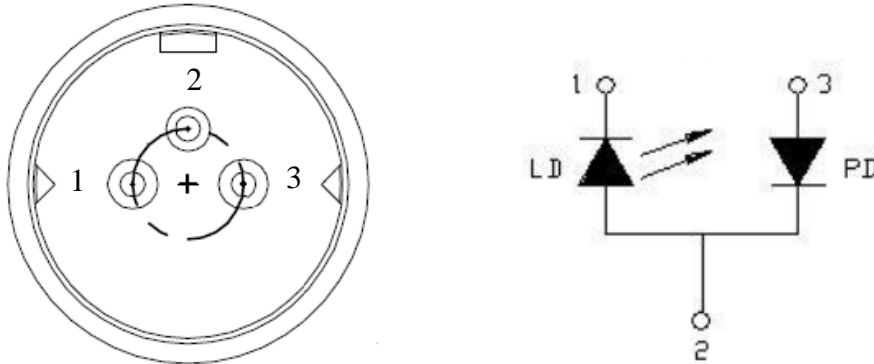
E-MAIL: Ldsales@arimalasers.com | www.arimalasers.com

For reference only. Contents above are subject to change without notice.

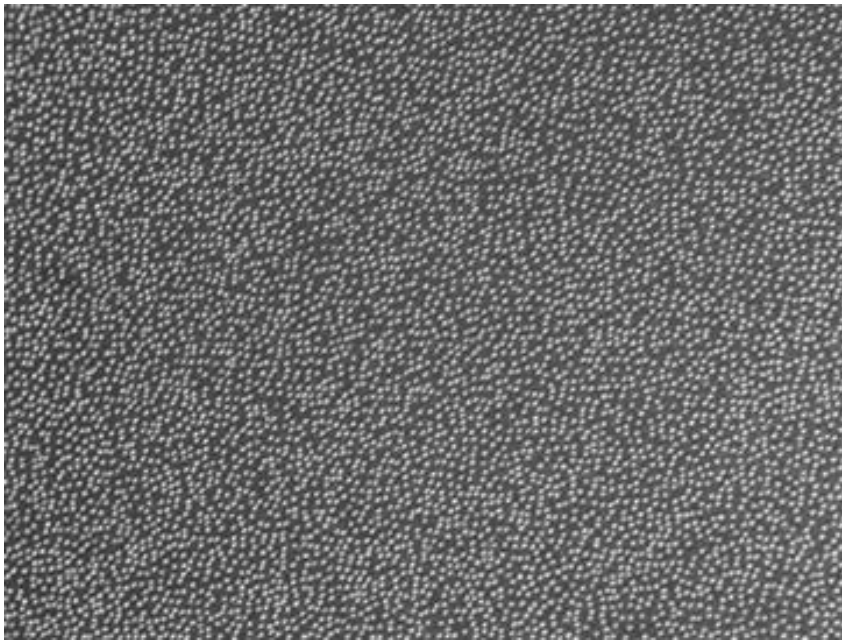
Arima
LASERS

Φ9.0mm 830nm Laser Module With Random Dots Pattern

PIN Assignment:



DOE Pattern



• Precautions

- * Do not operate the device above maximum ratings. Doing so may cause unexpected and permanent damage to the device.
- * Take precautions to avoid electrostatic discharge and/or momentary power spikes. A change in the characteristics of the laser or premature failure may result.
- * Proper heat sinking of the device assures stability and lifetime. Always ensure that maximum operating temperatures are not exceeded.
- * Observing visible or invisible laser beams with the human eye directly, or indirectly, can cause permanent damage. Use a camera to observe the laser.
- * No laser device should be used in any application or situation where life or property is at risk in event of device failure.
- * Specifications are subject to change without notice. Ensure that you have the latest specification by contacting us prior to purchase or use of the product.

ARIMA LASERS CORP.

PHONE: 886-3-4699800 | FAX: 886-3-4699600

E-MAIL: Ldsales@arimalasers.com | www.arimalasers.com

For reference only. Contents above are subject to change without notice.